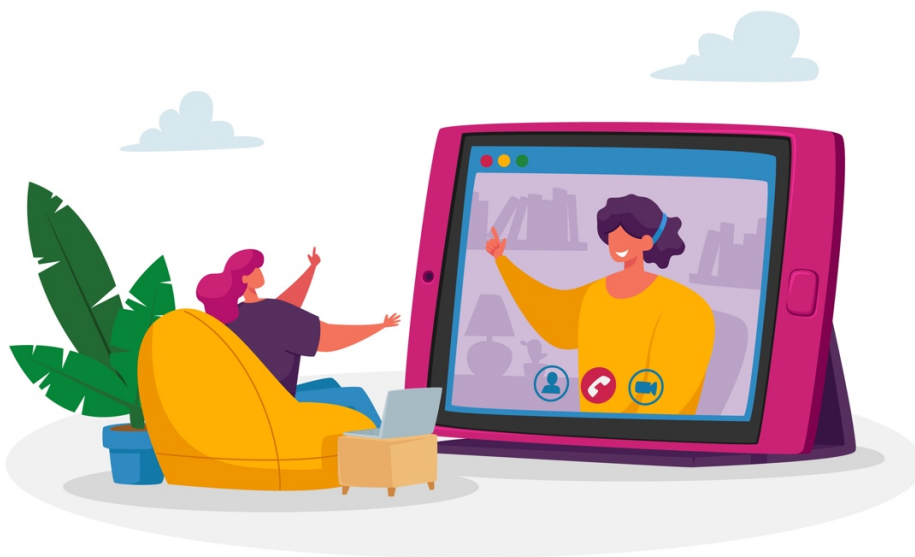


**FRIENDS OF SCHENECTADY
COUNTY
PUBLIC LIBRARY
2020 ANNUAL REPORT**

“THE YEAR WE WENT VIRTUAL”



FRIENDS MAKE GREAT LIBRARIES!

PRESIDENT'S REPORT

Thanks to our wonderful, caring and fearless volunteers, we made it through 2020. There were many programs that had to be cancelled due to Covid-19. Having Delia Owens, author of *Where the Crawdads Sing*, come to speak was a much-anticipated event that didn't happen. The ever popular Repair Café, our Annual Dinner, the last few Beat the Snow concerts, the Young Musicians Forum, the always fun Harry Potter Day, and the great Literary Trips were also cancelled.

Even though we couldn't hold programs at the library, our Noon programs resumed in September. We all got very familiar with Zoom over the summer and we were able to have the Noon programs and Board meetings on that platform. This is continuing into 2021, with Beat the Snow Concert series also trying a new virtual format, as a way to meet and share programs.

The library closed on March 15th, 2020 along with online and both bookstores. There was no access for anyone until the end of June, when online resumed operations. The bookstores followed in early July with limited hours. With the closures, the community really missed the access to books.

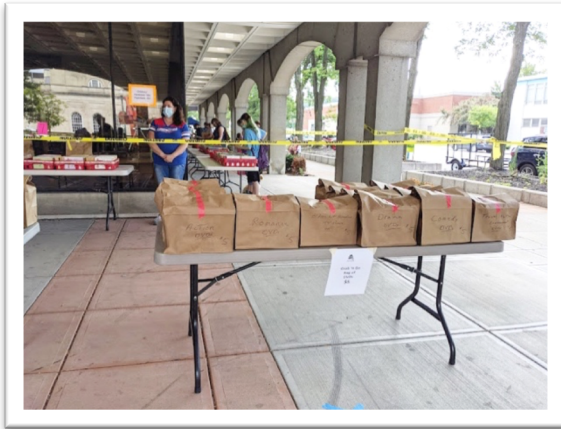
The Book Sale committee managed to have four safe, socially distanced sidewalk sales that were definitely welcomed by the community.

During the summer the Friends advocated for the County to open the KBJ Library on a limited basis. Eventually the County opened the branches, but not the KBJ library, as they were using it for other things. The branches were closed again shortly after. We were asked to stop operations again in November, which impacted online sales and sorting. The stores were able to stay open but online closed again.

It certainly was an interesting year for all of us navigating the new normal. Zoom, social distancing, limited access to the library and following strict guidelines for the stores were the order of the day. The lack of revenue has hampered some things but we have managed to provide quality programs, access to books and to provide the needed funds to allow the library to continue the wonderful children's programming that was so needed at this time.

Another year in the books, a rough one at that, but we learned much from it and the Friends will use our experiences to make 2021 a banner year. - Charlene Roman

BOOK SALES



Little did we know as 2020 began, how dramatically different life would be by March. We decided to cancel the Winter Book Sale because our inventory was limited and we expected to sell those books at the Spring Sale in May. As you all know, the Spring and Fall Book Sales were cancelled due to the Covid-19 restrictions.

The Book Sale Committee did a quick pivot and with a little creativity and lots of help from volunteers, we instead held four much smaller sidewalk sales in July, August, September and October. Each sale featured different categories of books. The profits were \$1,522, \$1,330, \$1,842 and \$2,317, respectively. In addition, we took in \$1,240 from bulk recycling sales and \$250 from our book sorters, for a grand total of \$8,501.

Although our profits were down considerably from the traditional book sales, we succeeded in putting books into the hands of our book-loving community and freed up space on our shelves which allowed us to resume accepting book donations, continuing the cycling of books from buyers to donors to buyers.

- Cheryl Nechamen



BOOKSTORES

Coming off of a great year in 2019, we had very high hopes for both stores in 2020.



In February we celebrated A Second Look's first year of operation. By March 15th, both stores were closed and remained so until early July. At one point, Chris Witkowski and I loaded up tote bags of books and donated them to SICM food pantry to be distributed with food pick-ups. At that point any way to provide

books to people was pretty much nonexistent.

At the end of June, retail was able to open up again. We discussed ways to safely open one or both stores. Since ASL seemed more likely to allow our patrons to socially distance, due to its size, we set out to open that first. The Governor did not add malls to the retail phase opening so we changed gears and opened the Whitney with strict guidelines. It was a little challenging to open the Whitney but with a few tweaks we were able to achieve it. The store opened with limited days and hours, and over the months, many new volunteers signed on and we were able to stay open Wednesdays through Sunday. The malls were allowed to follow suit a few weeks after.

Both stores have been open ever since. In early November we heard rumblings that the library might be closed to the Friends again so we decided to load the stores up with books just in case. With the help of the volunteers, both stores were filled to capacity. Luckily when the County did shut the Friends out of the library we were able to stay open during the holiday season. - Charlene Roman

JUNIOR FRIENDS

This year the Junior Friends paused activities due to the Covid-19 pandemic. However, many of our members still helped in our community by volunteering with the group Teens Helping Seniors and adjusting to school and extracurriculars during this difficult time. We are very proud of them! – Melissa Aucompaugh

MEMBERSHIP

Our member total for 2020 was 772 with 42 new members. Activity for Juniors was very slow and only 2 new members were recruited. Active membership at this time is 740. The decline is due to the culling of overdue renewals from 2018 and several deaths. – Norrine Thompson

MUSIC

Concerts were held, as usual, in the McChesney Room on Sundays, with the first presentation on January 5. The new performers in 2020 included: Bleecker Consort, Sophia Subbayya Vastek, and Carolina Medina. The wonderful regulars included: Bien Baez, Michael Clement, Musicians of Ma'alwyck, Donald Hyman, Roseanne Hargrave, Michael Clement, Malcolm Kogut doing a sing-along, the Schenectady Light Opera Company, and Mark Tommasone.

As the Covid-19 pandemic gained strength, the final three concerts were cancelled including the Empire State Youth Orchestra, Douglas Chilton and Kevin Green, and the Etude Club of Schenectady. The attendance ranged from 32 to 95, averaging 67 each concert. As usual the audiences were appreciative and engaged. Many thanks to the Friends for their support in this activity. This year marks my fifth year as organizer of the concerts. – Janice Walz

NOON PROGRAMS

The year 2020 started like any other year with the Winter Books Sandwiched In Series in January and February. As we all know the library closed in March forcing us to cancel the remaining programs. In September we were able to resume our regular book reviews and talks over Zoom with the help of Doug Bixler, the Design and Communication Director at the library. The program was met with a good deal of success thanks to the Noon Program committee members, the presenters and, of course, the people who attended.

The patience and willingness to try something new has enabled this program to grow and see new possibilities. – Geri Mulligan

ONLINE BOOKS

Online books suffered two lengthy shutdowns due to Covid-19 but our dedicated 5-star Amazon/Top seller eBay team picked right up when we could resume our 6-days-a-week work. We are most grateful to our wonderful volunteers, who have stuck with us. Our major change for the year is that after 10 years of outstanding service, Shawn Schultz has stepped down as director; she remains a regular volunteer and guiding light – Valerie Catlin

NEWSLETTER/PUBLICITY/ADVOCACY

The newsletter continues to be one of the primary means of updating members about Friends activities. It is distributed five times a year by mail and email (based on member preference) and is posted on our Facebook page and website. Due to impacts of, and uncertainty surrounding the early days of the Covid-19 pandemic, the May/June newsletter was distributed via online methods only. The newsletter provides an overview of recent Friends events and efforts, promotes upcoming Friends and library events that are of interest to the members, and has other items of interest, including calls for volunteers, book store information and book donation guidelines.

We utilized email blasts and Facebook posts to keep our membership informed of all updates regarding the Covid-19 crisis as it related to the library.

In late August, 2020, the Friends began a robust online campaign to solicit community support to advocate, in strict compliance with the Covid-19 protocols in place at that time, for the reopening of limited in-person services at the Central Library and branches. In addition to social media posts, several letters to the editor were sent to the Daily Gazette. Most branch libraries reopened on a limited basis in early October, however the Karen B. Johnson Central Library remained closed to in-person, except for some Saturday morning hours. In January, 2021, all of the libraries were once again limited to curbside service only.

The Friends will always advocate to ensure that the best library services are made available to our community. - Danielle Gray & Christine Witkowski.



TRIPS

Due to the ongoing coronavirus pandemic, the Friends spring 2020 day trip to West Point was canceled. Conditions have prevented us from scheduling a fall 2020 or spring 2021 day trip.

Our April 2020 Tulip Cruise through the Netherlands and Belgium with Collette tours was postponed and rescheduled for April 2022. Our November, 2020 America Music Cities trip to New Orleans, Memphis and Nashville was postponed until November, 2021. Participants were issued refunds or chose to roll their payment over to a future trip. - Sue Crawford and Gail Denisoff

NOMINATIONS

We present the following slate of Officers and Directors for terms beginning in April, 2021

President: Charlene Roman
1st Vice President: Norrine Thompson
2nd Vice President: Jaime Williams-Peterson
Secretary: Christine Witkowski
Treasurer: Shirley DeBono

The following are candidates for Directors:

For an initial three-year term:
Andrea Herman
Emily Hough
Janice Walz

For a second three-year term:
Joan Molloy
Charles Richardson
Christine Witkowski

The following will be leaving the Board and we thank them for their service:
Barbara Armstrong, Val Catlin, and Chris Makofski

Biographies of new Directors:

Andrea Herman – Andrea started at Crandall Public Library in the Reference Department in 1989 and was promoted through the years to the Head of Adult Services. She felt it was time to retire in 2019 with the plan to spend more time with her grandchildren and travel. Covid-19 changed her plans but she found a great place to use her skills at the Whitney Book Corner and as a shipper for online book sales. She also volunteers at Young Families, an organization that provides support for parents with young children.

Emily Hough - Growing up in the Sullivan County Catskills, Emily started volunteering at her local library when she was twelve and there she convinced the head librarian it was time to start a young adult book collection. After graduating from St. Thomas Aquinas College in 2012, she joined the Peace Corps. She lived for two years in a mountainside Indonesian village, teaching high school students confidence as much as she taught them English. Emily is a storyteller who loves adventures, art projects, geocaching, and recommending a good book. She is a volunteer at the Whitney Book Corner and A Second Look Bookstore.

Janice Walz – Jan is a retired teacher of the gifted. She has always been involved in the arts of the Capital Region, serving on the boards of many of the local leagues of arts. She has sung with the Octavo Singers, SLOC, Classical Theater Guild, Not-So-Common Players, and OPPS (Our Own Productions), and various church choirs. Walz has also been very active in local church and civic organizations. She has participated in the Friends Beat the Snow Concerts either for Octavos or SLOC and took over the programming for the series in 2015.

IN MEMORIAM

Lillian Stern - Lillian was very active in many social and community activities well into her 90's. She was a long-time member of the Friends, active in the noon programs and newsletter mailings.

Joyce Parry – Joyce and George Gould were the first co- managers of the Whitney Book Corner. They managed from the time the store opened in 2002 until 2006. She was also the financial manager until 2013.

John Goldsmith - John planned and guided a literary tour of his homeland of England for the Friends. After that, he coordinated many more Friends trips to Europe and the UK, including Ireland and France.

Friends of the Schenectady County Public Library

Balance Sheet Prev Year Comparison 2019-2020

Cash Basis

As of December 31, 2020

	Dec 31, 20	Dec 31, 19	\$ Change	% Change
ASSETS				
Current Assets				
Checking/Savings				
BOA Checking	37,569.82	15,795.54	21,774.28	137.9%
BOA Savings for Square	21,913.06	9,253.01	12,660.05	136.8%
Money Market Accounts	353,455.54	360,067.91	-6,612.37	-1.8%
WBC Cash Register	367.50	367.50	0.00	0.0%
Total Checking/Savings	413,305.92	385,483.96	27,821.96	7.2%
Other Current Assets				
Investments	89.28	89.28	0.00	0.0%
Total Other Current Assets	89.28	89.28	0.00	0.0%
Total Current Assets	413,395.20	385,573.24	27,821.96	7.2%
Other Assets				
AAA - Travel Card Online Sales	1,103.17	1,650.04	-546.87	-33.1%
AAA Travel Card - Friends Noon	163.34	233.23	-69.89	-30.0%
AAA Travel for Staff Expenses	1,044.84	1,850.05	-805.21	-43.5%
Bulk Postage Permit Account	237.67	320.46	-82.79	-25.8%
Pay Pal from Ebay sales	5,640.55	4,521.47	1,119.08	24.8%
Postage Due Acct	148.87	171.05	-22.18	-13.0%
WBC CCrd Sales to post	0.00	-108.11	108.11	100.0%
Total Other Assets	8,338.44	8,638.19	-299.75	-3.5%
TOTAL ASSETS	421,733.64	394,211.43	27,522.21	7.0%
LIABILITIES & EQUITY				
Liabilities				
Current Liabilities				
Other Current Liabilities				
Gift Cards	620.14	563.52	56.62	10.1%
Sales Tax Payable NYS	389.05	592.47	-203.42	-34.3%
Total Other Current Liabilities	1,009.19	1,155.99	-146.80	-12.7%
Total Current Liabilities	1,009.19	1,155.99	-146.80	-12.7%
Total Liabilities	1,009.19	1,155.99	-146.80	-12.7%
Equity				
Book Sales Fund	0.00	173,009.29	-173,009.29	-100.0%
Gilbert Endowmnt Fnd Restrict	1,000.00	1,000.00	0.00	0.0%
Great Decisions	0.00	147.02	-147.02	-100.0%
Love-Jatulis Charitable Gift	1,000.00	1,000.00	0.00	0.0%
Music Fund	11,289.54	11,289.54	0.00	0.0%
Niskayuna Landscape Fund	764.73	794.96	-30.23	-3.8%
Operating Funds	0.00	98,023.83	-98,023.83	-100.0%
Whitney Book Corner & 2nd Look	0.00	230,453.14	-230,453.14	-100.0%
Woodlawn Fund	1,304.53	1,304.53	0.00	0.0%
3900 - Retained Earnings	377,689.48	12.00	377,677.48	3,147,312.3%
Net Income	27,676.17	-123,978.87	151,655.04	122.3%
Total Equity	420,724.45	393,055.44	27,669.01	7.0%
TOTAL LIABILITIES & EQUITY	421,733.64	394,211.43	27,522.21	7.0%

Friends of the SCPL Operating Income and Expenses, 2019 and 2020

	<u>2020</u>	<u>2019</u>	<u>\$ Change</u>	<u>% Change</u>
Income				
Book Sale Income	9,104.22	40,872.75	(31,768.53)	-77.7%
Contributions	23,715.46	30,950.26	(7,234.80)	-23.4%
Friends trips	0.00	3,942.00	(3,942.00)	-100.0%
GE Match	1,765.16	3,170.00	(1,404.84)	-44.3%
Gifts/Memorial Contributions	2,875.00	5,166.00	(2,291.00)	-44.4%
Interest & Dividends	3,389.17	4,974.56	(1,585.39)	-31.9%
Junior Friends Revenue	0.00	1,063.93	(1,063.93)	-100.0%
On line sales	40,762.62	53,945.08	(13,182.46)	-24.4%
300 · 2nd Look Income	20,898.13	42,175.55	(21,277.42)	-50.4%
301 · Whitney Book Corner	<u>21,195.30</u>	<u>55,008.34</u>	<u>(33,813.04)</u>	<u>-61.5%</u>
Total Income	<u>123,705.06</u>	<u>241,268.47</u>	<u>(117,563.41)</u>	<u>-48.7%</u>
Expenses				
Accounting Review	1,130.00	1,125.00	5.00	0.4%
Annual Dinner	0.00	541.00	(541.00)	-100.0%
Author Events	-4,800.00	12,850.77	(17,650.77)	-137.4%
Bank Service Charge	26.29	0.00	26.29	100.0%
Bookkeeping Services	4,387.50	0.00	4,387.50	100.0%
Book Sale Expenses	25.00	3,238.80	(3,213.80)	-99.2%
Equipment	0.00	8,830.37	(8,830.37)	-100.0%
Friends Programs and Events	148.59	2,742.30	(2,593.71)	-94.6%
Friends Trips Expenses	0.00	3,404.00	(3,404.00)	-100.0%
Insurance	1,327.80	1,318.77	9.03	0.7%
Library Week	0.00	649.51	(649.51)	-100.0%
Membership	366.07	1,348.73	(982.66)	-72.9%
Memorials/Gifts Expense	58.30	1,200.00	(1,141.70)	-95.1%
Miscellaneous	140.68	0.00	140.68	100.0%
Mont Pleasant Branch	13,947.60	21,792.05	(7,844.45)	-36.0%
Museum Pass Program	1,125.00	5,809.03	(4,684.03)	-80.6%
Newsletter	1,846.00	3,209.00	(1,363.00)	-42.5%
Online Book Sales	10,870.81	14,746.55	(3,875.74)	-26.3%
Other	733.09	2,711.46	(1,978.37)	-73.0%
Piano	150.00	0.00	150.00	100.0%
Postage	754.06	1,105.31	(351.25)	-31.8%
Program Supplies, Adult	2,627.37	13,944.05	(11,316.68)	-81.2%
Program Supplies, Children-	5,402.91	14,645.61	(9,242.70)	-63.1%
Program Support - Publicity	6,511.37	12,317.90	(5,806.53)	-47.1%
Program Support Spec Circ	811.11	76,369.60	(75,558.49)	-98.9%
Programs, Adults	15,018.15	27,453.35	(12,435.20)	-45.3%
Programs, Children-YA	9,250.41	26,601.58	(17,351.17)	-65.2%
Publicity	2,517.54	2,584.55	(67.01)	-2.6%
Staff Development	1,974.58	4,306.72	(2,332.14)	-54.2%
STARS	2,500.00	1,142.60	1,357.40	118.8%
Technology Support	-277.00	1,149.40	(1,426.40)	-124.1%
Treasurer's Supplies	97.24	0.00	97.24	100.0%
Volunteer Events	0.00	925.44	(925.44)	-100.0%
500 · 2nd Look Expenses	7,024.03	9,741.32	(2,717.29)	-27.9%
501 · Whitney Book Corner Expenses	10,334.39	10,138.21	196.18	1.9%
Total Expense	<u>96,028.89</u>	<u>287,942.98</u>	<u>(191,914.09)</u>	<u>-66.7%</u>
Net Income	<u>27,676.17</u>	<u>(46,674.51)</u>	<u>74,350.68</u>	